

Network Shutdown Readme

Introduction

Network Shutdown 3 gives you the power to save energy, money and the environment by intelligently shutting down your RM network on a schedule.

Some of the top features include:

- A smart, informative and simple GUI that monitors the shutdown process
- Faster than scripts thanks to WMI commands
- Only attempts to shutdown active machines
- Safe list allows you to exclude certain computers from the shutdown
- Shutdown log identifies computers that failed to shutdown

Most shutdown scripts are indiscriminate, running through a fixed list of computers with the shutdown command, littering command prompt instances everywhere and hanging when machines are already switched off. Network Shutdown ties in tightly to your network. It uses the PackageControl folder to get a list of all domain machines, so it can never shut down your servers or any non-domain machines by accident.

Even better, it uses WMI to find only the computers that are running and WMI to perform the shutdown commands, meaning low resource usage, fast run times and a responsive GUI.

Unlike most scripts, you can even view which machines didn't shutdown successfully. A shutdown log is written out each time the program runs for you to review.

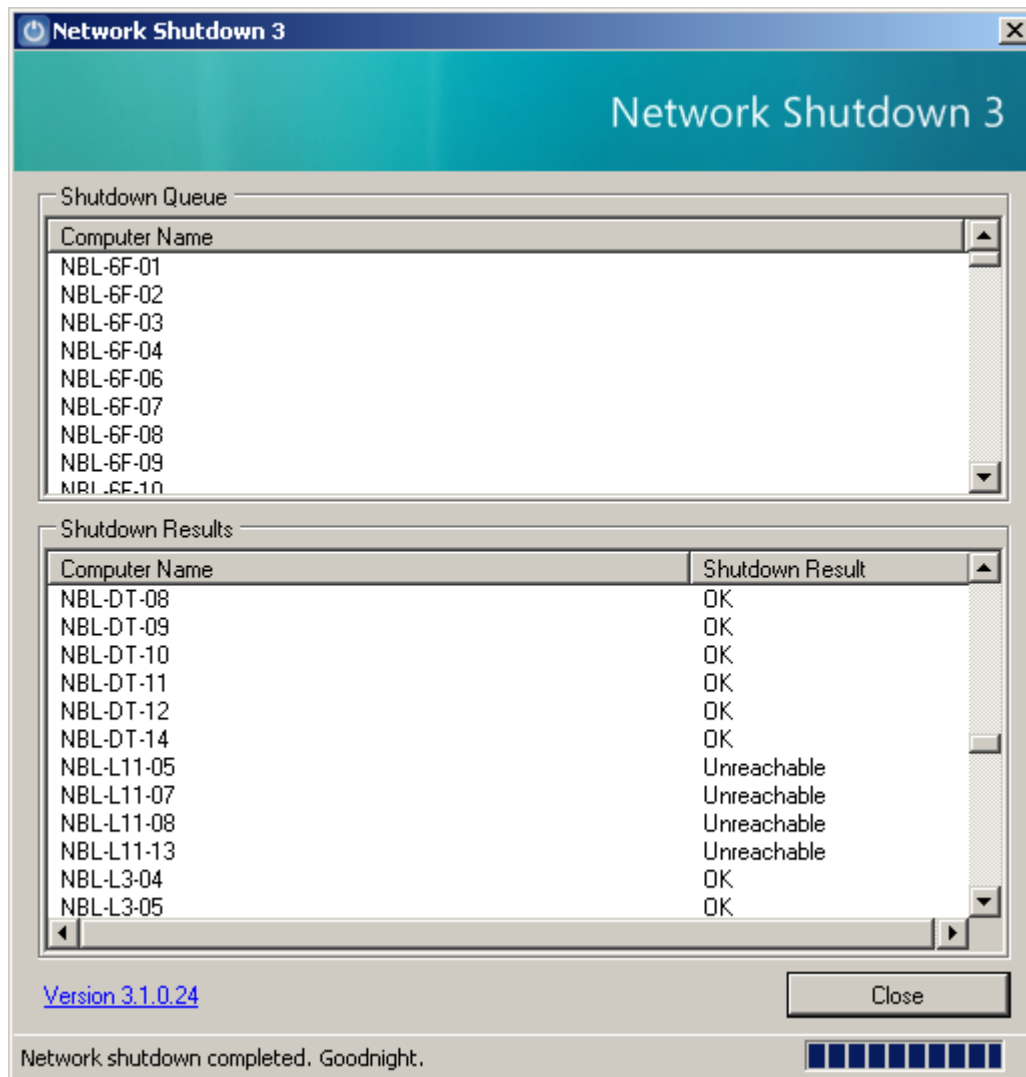
Installation

Installing Network Shutdown is very quick, you should be up and running in under 5 minutes.

1. Download the Core Files zip from [here](#). If you're reading this you probably already have.
2. Navigate to the "Program Files" folder in Windows Explorer
3. Copy the "Network Shutdown" folder from the zip file into "Program Files".
4. Open Scheduled Tasks (Task Scheduler on Vista / Server 2008) and create a new task that runs the Network Shutdown.exe file at the desired time. You can create multiple schedules for the application if you like.
5. That's it!

Getting Started

Network Shutdown is almost entirely automated and needs no user interaction after the initial setup. The user interface looks like this:



There are 3 main sections: the shutdown queue, the shutdown results and the status bar.

Shutdown Queue

The shutdown queue is a list of the domain computers that have been scanned and found to be online. When the shutdown begins, the program will issue a WMI shutdown command to each computer in turn.

Shutdown Results

When each computer has responded to the WMI command, the result will be added to this list. The two possible results are OK and Unreachable.

OK indicates that the computer was online, the command was sent successfully and the machine shutdown.

Unreachable means that the computer was either already shutdown when the command was sent, or that WMI is disabled or blocked by a firewall. Even though Network Shutdown only attempts to shutdown online computers it's possible that computers were shutdown between the scan and the shutdown command being sent.

Status Bar

The status bar shows the activity of the program. When it first starts up, it will indicate that the software is scanning for online computers. Second, it will count down the time remaining until the shutdown process begins (you have 10 seconds to abort). Finally, it will report the progress of the shutdown.

Configuration

Editing the safe list

The safe list excludes certain computers from the shutdown process. For example, you might want to leave your admin computers running overnight.

To edit the list, browse to the folder you installed to and open the Network Shutdown.exe.config file, this contains all the program settings.

You'll see an XML structure similar to the one below:

```
<?xml version="1.0"?>
<configuration>
<configSections>
  <sectionGroup name="applicationSettings"
type="System.Configuration.ApplicationSettingsGroup, System,
Version=2.0.0.0, Culture=neutral, PublicKeyToken=b77a5c561934e089" >
  <section name="Network_Shutdown.Properties.Settings"
type="System.Configuration.ClientSettingsSection, System, Version=2.0.0.0,
Culture=neutral, PublicKeyToken=b77a5c561934e089" requirePermission="false"
/>
  </sectionGroup>
</configSections>
<startup><supportedRuntime
version="v2.0.50727"/></startup><applicationSettings>
  <Network_Shutdown.Properties.Settings>
    <setting name="SafeList" serializeAs="String">
      <value></value>
    </setting>
  </Network_Shutdown.Properties.Settings>
</applicationSettings>
</configuration>
```

The section we're looking for is the "SafeList" value; the rest can be safely ignored. The computer names you want to exclude should be placed inside the `<value></value>` brackets, separated by semicolons. For example:

```
<setting name="SafeList" serializeAs="String">
  <value>NBL-ADMIN-01;NBL-ADMIN-02;StudyRoom-01</value>
```

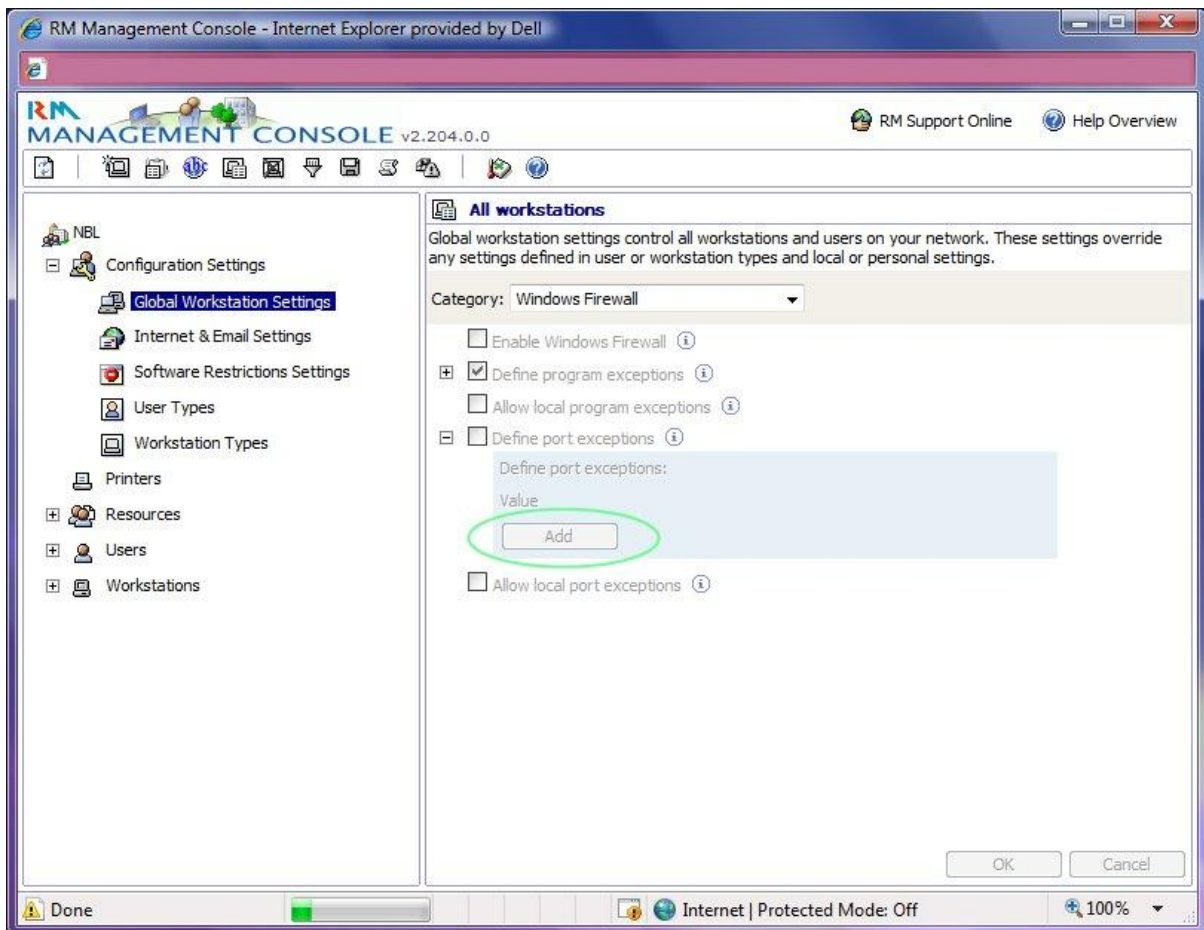
Save the file when you're done editing and that's it.

Troubleshooting

Many or all computers are showing "unreachable" as their shutdown result

Network Shutdown uses WMI (Windows Management Instrumentation) to perform its shutdown commands. While this has its advantages over the "shutdown -m" command, it's more sensitive to firewall issues.

RM networks should have WMI's required ports open by default but you can check this in the Management Console under Configuration Settings -> Global Workstation Settings.



It might be necessary to add port exceptions for the WMI ports which are **135 and 445**. You will need to reboot the workstations for this to take effect. If you are still having problems after this you can refer to [this guide](#) by Microsoft.

Network Shutdown 3 - ©2008 Paul Beesley

www.paulbeesley.com/software/networkshutdown